



REC# : 752788

RECORDED 5/8/2019 AT 1:17 PM BK# 2620 PG# 1830
Debra K. Lee, CLERK OF LARAMIE COUNTY, WY PAGE 1 OF 1

STATE OF WYOMING CORNER RECORD

(In compliance with the CORNER PERPETUATION AND FILING ACT, Wyoming Statutes, 1997 Section 33-29-140, et. seq., and the Rules and Regulations of the Board of Registrations for Professional Engineers and Professional Land Surveyors)

NORTHWEST CORNER SECTION 6, T. 18N., R. 63 W., 6TH P.M., LARAMIE COUNTY, WYOMING

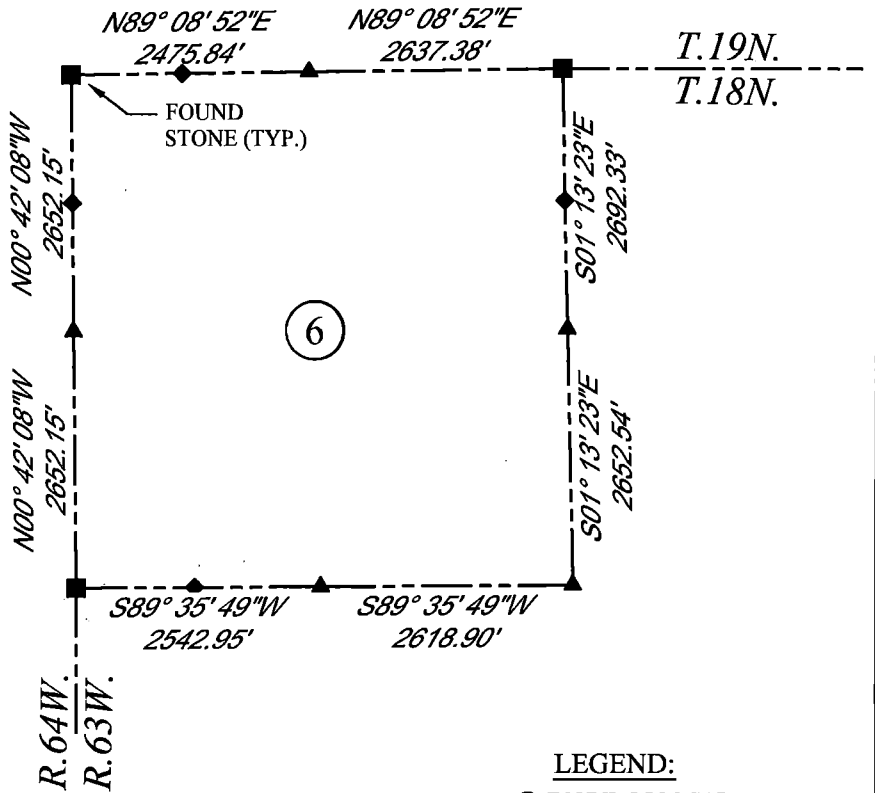
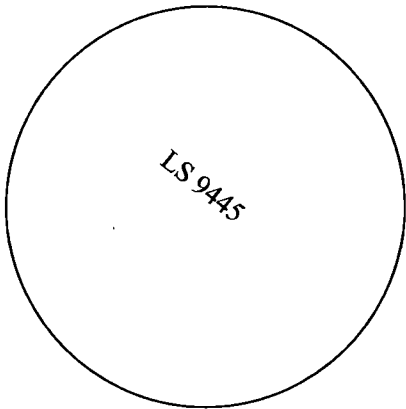
GLO: SET A GRANITE STONE 20X16X10, 15 IN. DEEP WITH 6 MARKS ON EACH OF ITS 4 FACES. SET TO THE CARDINAL POINTS AND RAISED A MOUND OF STONE AROUND IT FOR CORNER TO TPS 18 AND 19 NORTH, RANGES 63 AND 64 WEST.

FOUND: 1.5 ALUMINUM CAP AT SURFACE, MARKED AS SHOWN, BESIDE FOUND STONE



SCALE: NONE
NORTH DETERMINED BY
G.P.S OBSERVATIONS

FOUND 1.5" ALUMINUM CAP, STAMPED AS SHOWN



LEGEND:

- FOUND BLM CAP
- FOUND USFS CAP
- FOUND STONE
- FOUND PRIVATE MONUMENT
- ▲ CALCULATED POSITION
- ◆ SET MONUMENT (LS10245)
- SECTION LINE

DATE OF FIELD WORK: 08/17/2018 OFFICE REFERENCE: MERIDEN

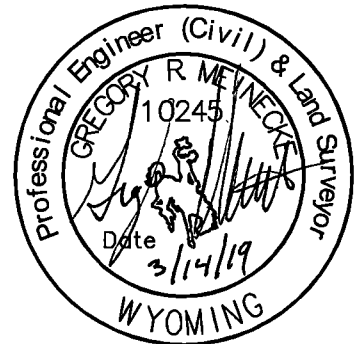
CROSS INDEX DIAGRAM

A	1	2	3	4	5	6	7	8	9	10	11	12	13	14	15	16	17	18	19	20	21	22	23	24	25
B																									
C		6																							
D			5																						
E				4																					
F					3																				
G						2																			
H							1																		
J																									
K																									
L																									
M																									
N																									
O																									
P																									
Q																									
R																									
S																									
T																									
U																									
V																									
W																									
X																									
Y																									
Z																									

WOOD
2615 AVIATION DRIVE
SHERIDAN, WY 82801
PH: 307-675-6400



THIS CORNER RECORD WAS
PREPARED BY ME OR UNDER
MY DIRECTION AND
SUPERVISION,
SEAL AND SIGNATURE



CORNER NAME: NORTHWEST CORNER
SBRPELS/PLSW: MARCH 1994; PLSW JANUARY 1998

SECTION: 6 T. 18 N., R. 63 W. ; 6TH P.M. CROSS-INDEX # A-1